



Welcome

New file

- Create a new empty script file
- Create a new script file using the Script Wizard

Open file

- Open an existing script file

Example scripts...  
More files...  
C:\Users\Rakotomandimby\Desktop\exam.iss  
C:\Users\Rakotomandimby\Desktop\new.iss  
E:\Logiciel\Program\Inno Setup 5\Examples\64Bit.iss

Don't show this dialog again



Inno Setup Script Wizard



### Welcome to the Inno Setup Script Wizard

This wizard will guide you through the process of creating a new Inno Setup script file. The results will be used to generate a new script file which can be compiled directly or saved on disk for later use.

Not all features of Inno Setup are covered by this wizard. See the documentation for details on creating Inno Setup script files.

Click Next to continue, or Cancel to exit this wizard.

Create a new empty script file

Next > Cancel



**Inno Setup Script Wizard**

**Application Information**  
Please specify some basic information about your application.

**Application name:**  
my programme ← nom de l'application

**Application version:**  
1.5

Application publisher:  
My Company, Inc.

Application website:  
http://www.example.com/

bold = required

< Back Next > Cancel



**Inno Setup Script Wizard**

**Application Folder**  
Please specify folder information about your application.

**Application destination base folder:**  
Program Files folder

**Application folder name:**  
my programme

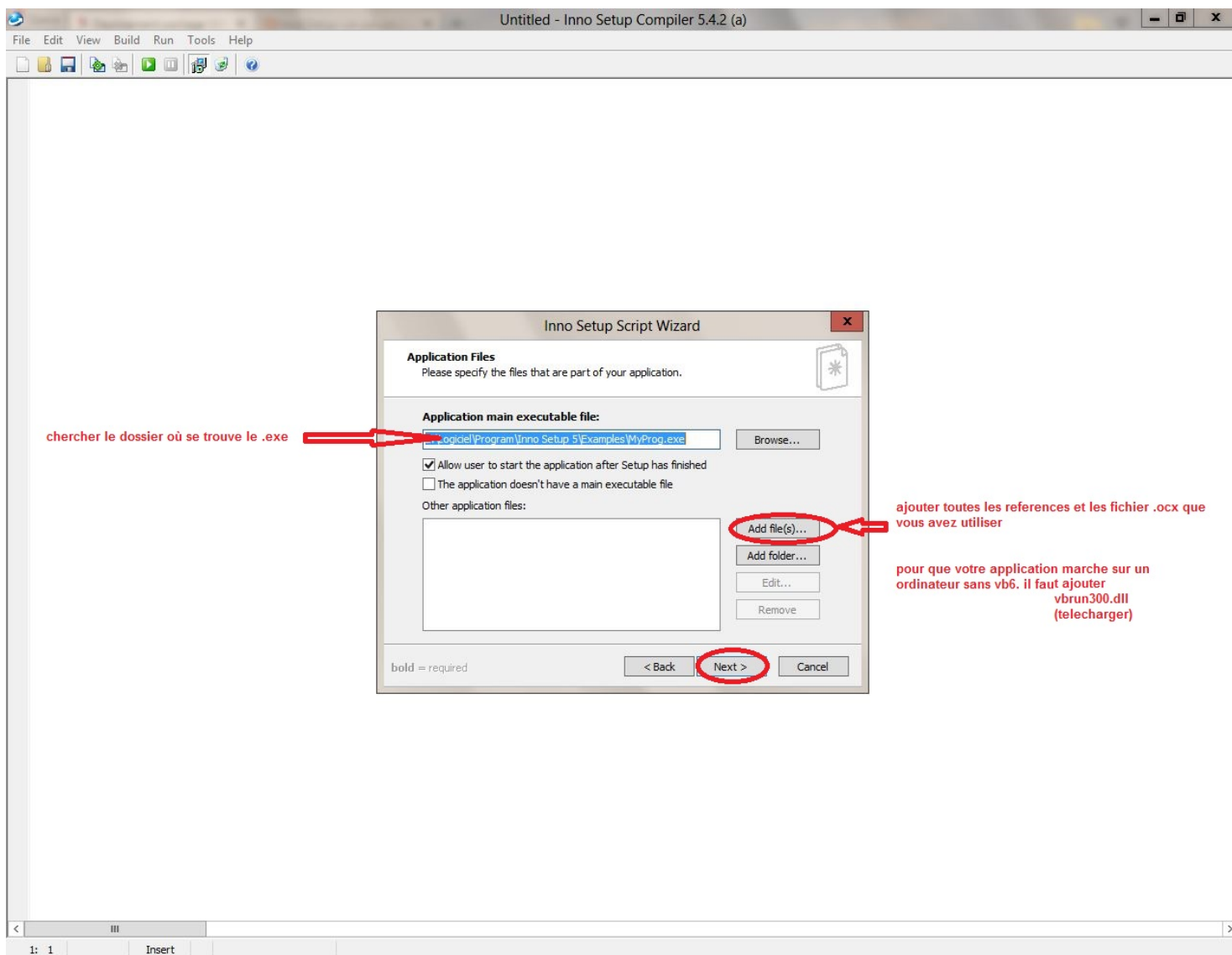
Allow user to change the application folder  
Other:  
 The application doesn't need a folder

bold = required

< Back Next > Cancel

dossier de destination lors de son installation  
mieux vaut ne pas changer

nom du dossier lors de son installation



chercher le dossier où se trouve le .exe

ajouter toutes les references et les fichier .ocx que vous avez utiliser

pour que votre application marche sur un ordinateur sans vb6, il faut ajouter vbrun300.dll (telecharger)



**Inno Setup Script Wizard**

**Application Icons**  
Please specify which icons should be created for your application.

**Application Start Menu folder name:**

- Allow user to change the Start Menu folder name
- Allow user to disable Start Menu folder creation
- Create an Internet shortcut in the Start Menu folder
- Create an Uninstall icon in the Start Menu folder

Other main executable icons:

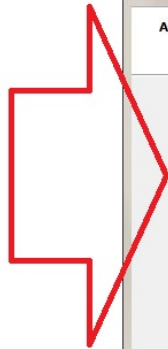
- Allow user to create a desktop icon
- Allow user to create a Quick Launch icon

bold = required

< Back   **Next >**   Cancel



fichier .txt



**Inno Setup Script Wizard**

**Application Documentation**  
Please specify which documentation files should be shown by Setup during installation.

License file:

Information file shown before installation:

Information file shown after installation:

< Back **Next >** Cancel



**Inno Setup Script Wizard**

**Setup Languages**  
Please specify which Setup languages should be included.

**Languages:**

- English
- Basque
- Brazilian Portuguese
- Catalan
- Czech
- Danish
- Dutch
- Finnish
- French
- German
- Hebrew
- Hungarian
- Italian

bold = required

< Back   **Next >**   Cancel





**Inno Setup Script Wizard**

**Compiler Settings**  
Please specify some basic compiler settings.

Custom compiler output folder:

Compiler output base file name:

Custom Setup icon file:

Setup password:

dossier de destination du setup



icon du setup





**Inno Setup Preprocessor**  
Please specify whether Inno Setup Preprocessor should be used.

The Inno Setup Script Wizard has detected the presence of Inno Setup Preprocessor (ISPP) and can therefore use #define compiler directives to simplify your script. Although this is not necessary, it will make it easier to manually change the script later.

Do you want the Inno Setup Script Wizard to use #define compiler directives?

Yes, use #define compiler directives

< Back   Next >   Cancel



```
; Script generated by the Inno Setup Script Wizard.
; SEE THE DOCUMENTATION FOR DETAILS ON CREATING INNO SETUP SCRIPT FILES!
```

```
#define MyAppName "my programme"
#define MyAppVersion "1.5"
#define MyAppPublisher "My Company, Inc."
#define MyAppURL "http://www.example.com/"
#define MyAppExeName "MyProg.exe"
```

[Setup]

```
; NOTE: The value of AppId uniquely identifies this application.
; Do not use the same AppId value in installers for other applications.
; (To generate a new GUID, click Tools | Generate GUID inside the IDE.)
```

```
AppId={{7FBC457A-DCAC-458C-AAF2-CAD5081312CA}}
AppName={#MyAppName}
AppVersion={#MyAppVersion}
; AppVerName={#MyAppName} {#MyAppVersion}
AppPublisher={#MyAppPublisher}
AppPublisherURL={#MyAppURL}
AppSupportURL={#MyAppURL}
AppUpdatesURL={#MyAppURL}
DefaultDirName={pf}\{#MyAppName}
DefaultGroupName={#MyAppName}
AllowNoIcons=yes
OutputDir=C:\Bureau
OutputBaseFilename=setup
Compression=lzma
SolidCompression=yes
```

[Languages]

```
Name: "english"; MessagesFile: "compiler:Default.isl"
Name: "french"; MessagesFile: "compiler:Languages\Fren
```

[Tasks]

```
Name: "desktopicon"; Description: "{cm:CreateDesktopIcon}"; GroupDescription: "{cm:AdditionalIcons}"; Flags: unchecked
```

[Files]

```
Source: "E:\Logiciel\Program\Inno Setup 5\Examples\MyProg.exe"; DestDir: "{app}"; Flags: ignoreversion
; NOTE: Don't use "Flags: ignoreversion" on any shared system files
```

[Icons]

```
Name: "{group}\{#MyAppName}"; Filename: "{app}\{#MyAppExeName}"
Name: "{group}\{cm:UninstallProgram,{#MyAppName}}"; Filename: "{uninstall.exe}"
Name: "{commondesktop}\{#MyAppName}"; Filename: "{app}\{#MyAppExeName}"; Tasks: desktopicon
```

[Run]

```
Filename: "{app}\{#MyAppExeName}"; Description: "{cm:LaunchProgram,{#StringChange(MyAppName, "&", "%%")}}"; Flags: nowait postinstall skipifsilent
```

